

University of South Carolina-Upstate
CLC Dishwasher Exhaust System
Project Number: CP00413282
Project Manager: Ben Coonrod

Addendum Number Two (2)

DATE: December 12, 2014

FROM: Aimee B. Rish, Procurement Specialist

TO: All Bidders

The following items add to, modify, clarify, or otherwise alter the Drawings and/or specifications and will become a part of the Contract Documents. Where a portion of the Drawings and/or specifications is added to, modified, clarified, or otherwise altered, the portion not so affected shall remain. Bidder shall include all effects that these items may have on his proposal.

Clarifications

1. A larger drawing of M-1 is attached.

Change

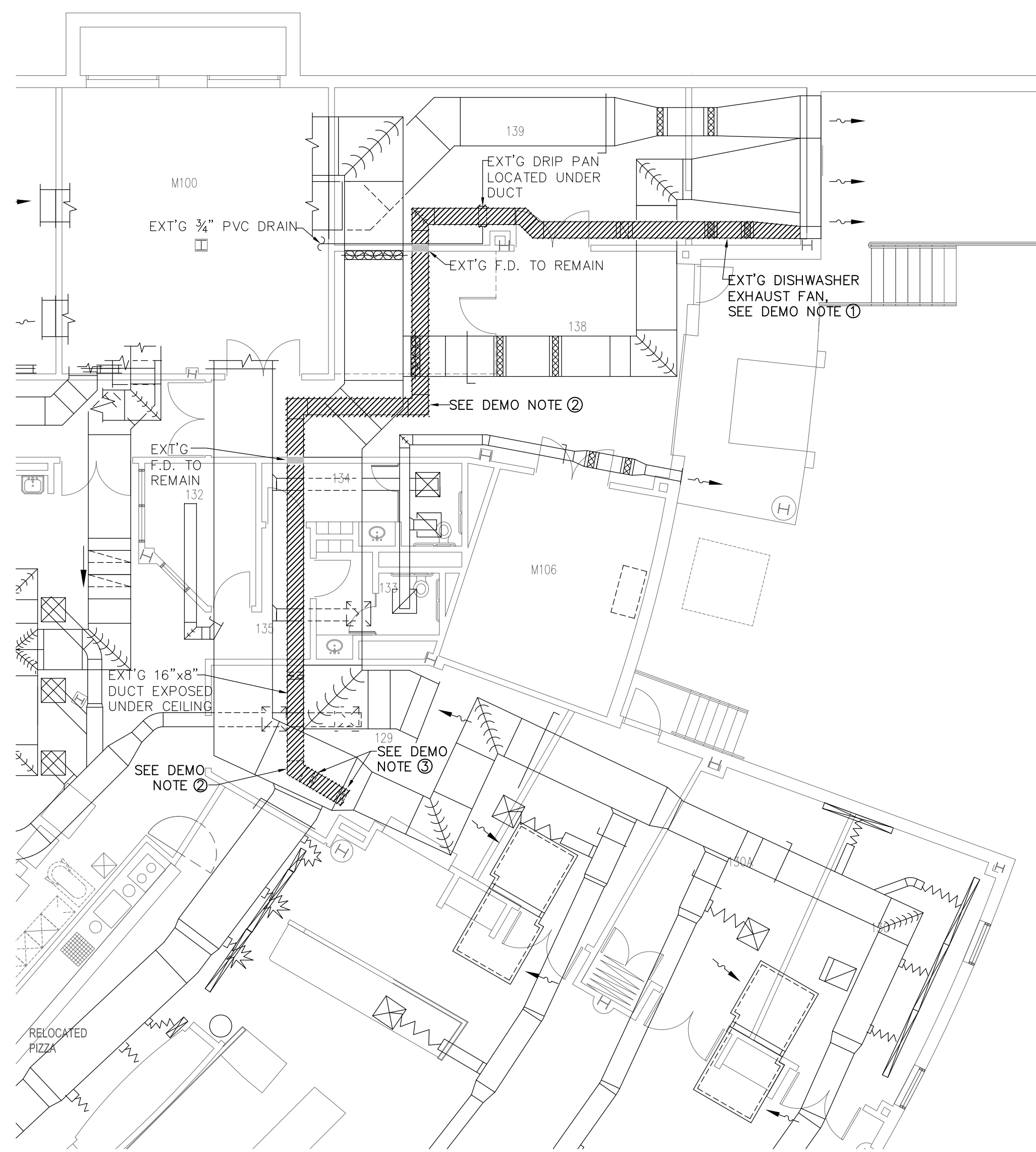
1. The bid closing time has been changed to 10:00AM on Monday, January 5, 2015 at 743 Greene Street; Columbia, SC; Conference Room 057.

Attachments

Drawing M-1

END OF ADDENDUM Number Two (2)

This drawing is the property of Peritus Engineers & Associates, Inc. and shall not be used or reproduced without their written permission. © 2014 PERITUS ENGINEERS & ASSOCIATES, INC.



PARTIAL HVAC DEMOLITION FLOOR PLAN
SCALE: 1/8" = 1'-0"

INDICATES ITEM TO BE REMOVED

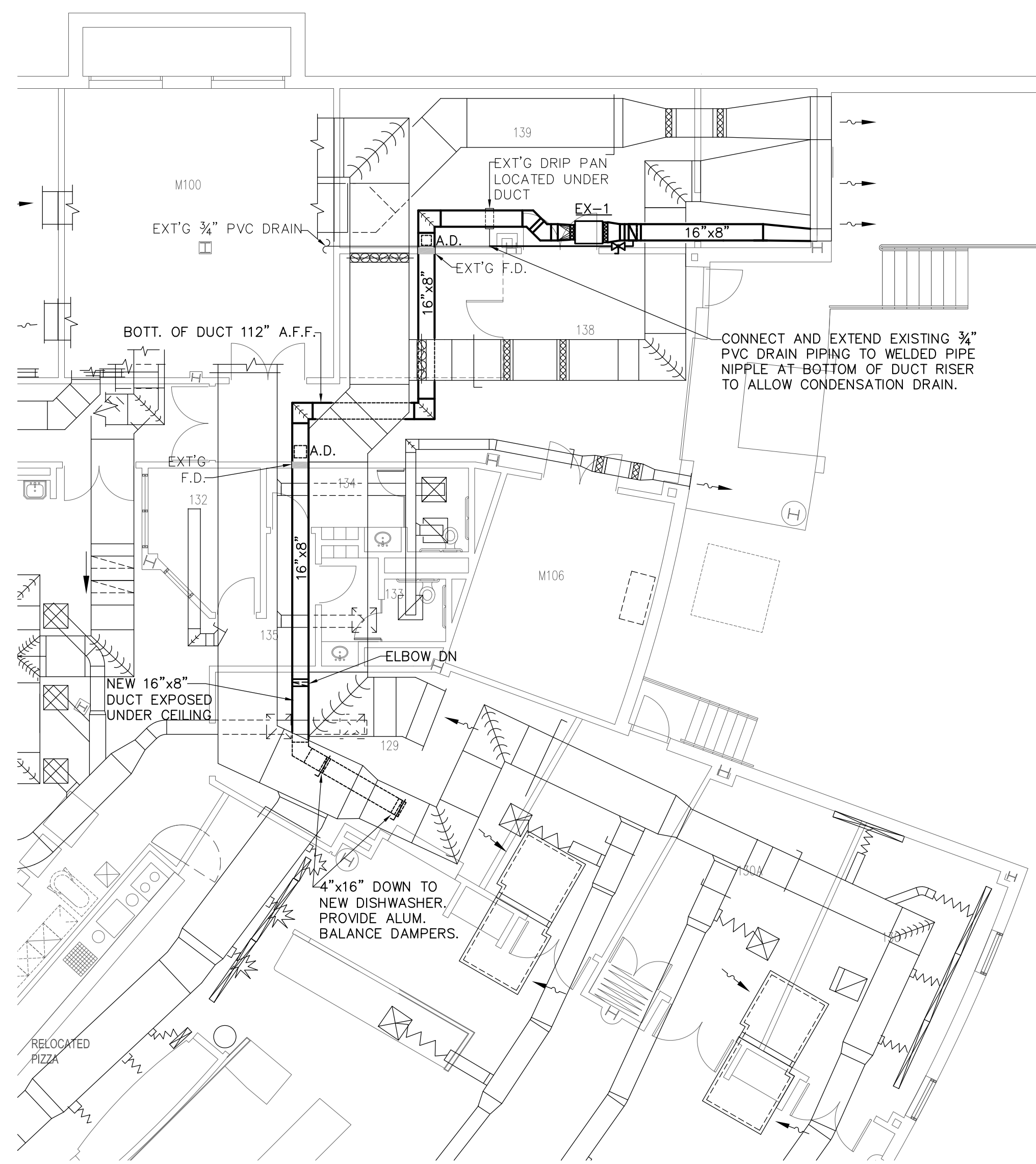
DEMOLITION NOTES:

- ① REMOVE EXISTING IN-LINE DISHWASHER EXHAUST FAN.
- ② REMOVE EXISTING DISHWASHER EXHAUST DUCT IN ITS ENTIRETY BOTH ABOVE AND BELOW CEILING, AND WHERE EXPOSED.
- ③ REMOVE EXISTING DISHWASHER EXHAUST BRANCH DUCTS UP TO CONNECTION TO EXT'G DISHWASHER. EXT'G DISHWASHER TO BE REMOVED BY OTHERS.

EXHAUST FAN SCHEDULE							
UNIT No.	PENNBARRY MODEL NO.	TYPE DRIVE	C.F.M.	S.P. INCHES	HP	VOLTAGE	REMARKS
EX-1	SX120BC	BELT	600	0.75	1/4	115/1/60	NOTES 1-4

NOTES:

1. ALUMINUM CONSTRUCTION, DUCT MOUNTED SQUARE CENTRIFUGAL INLINE FAN.
2. FLANGED DUCT CONNECTIONS.
3. SPRING VIBRATION ISOLATION HANGING KIT.
4. BACKDRAFT DAMPER, DISCONNECT SWITCH, AND MOTOR COVER.

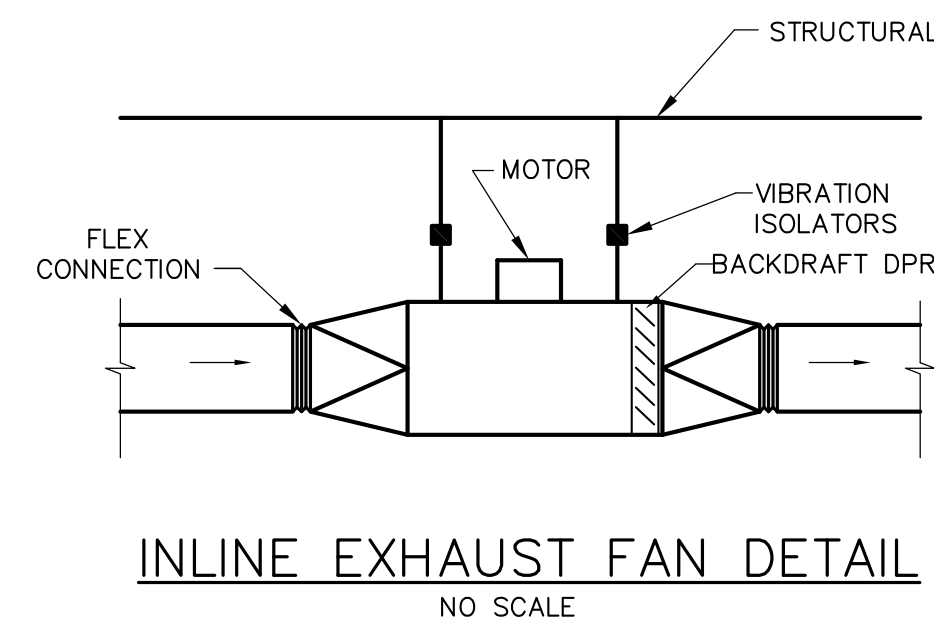


PARTIAL HVAC FLOOR PLAN - NEW WORK
SCALE: 1/8" = 1'-0"

ALL NEW WORK IN **BOLD**

MECHANICAL GENERAL NOTES

1. ALL SCHEDULES SHOWN ARE THE PURPOSE OF AIDING THE CONTRACTOR. THE CONTRACTOR SHALL BE RESPONSIBLE FOR ALL CORRECT TOTALS.
2. ALL ELECTRICALLY POWERED EQUIPMENT SHALL BE LISTED AND LABELED PER NATIONAL ELECTRICAL CODE, AND INTERNATIONAL MECHANICAL CODE, 2012 EDITION CHAPTER 3.
3. ALL EQUIPMENT SHALL BE ACCESSIBLE PER INTERNATIONAL MECHANICAL CODE, CHAPTER 3 2012 EDITION.
4. ALL DUCTWORK ROUTING AS SHOWN IS DIAGRAMMATIC AND MAY REQUIRE ALTERATIONS DIFFERENT FROM THAT SHOWN IN ORDER TO ACCOMMODATE STRUCTURE/ARCHITECTURAL FEATURES. CONTRACTOR SHALL FIELD VERIFY AND MAKE ALTERATIONS OR REVISIONS AS REQUIRED.
5. CONTRACTOR SHALL CONNECT NEW ALUMINUM CONSTRUCTION EXHAUST TO EXISTING FIRE DAMPERS (F.D.). PROVIDE ACCESSIBLE DUCT ACCESS DOORS (A.D.) FOR FIRE DAMPER ACCESS WHERE INDICATED.



MECHANICAL SPECIFICATIONS

MECHANICAL GENERAL PROVISIONS

COORDINATION OF MECHANICAL WORK:

GENERAL: It is recognized that the contract documents are diagrammatic in showing certain physical relationships which must be established within the mechanical work, and in its interface with other work including utilities and electrical work, and that such establishment is the exclusive responsibility of the Contractor.

QUALITY ASSURANCE, STANDARDS AND SYMBOLS:

General: The following standards are imposed, as applicable to the work in each instance:

- International Building Code (IBC), 2012 Edition
- NFPA Code
- International Energy Conservation Code (IECC), 2009 Edition
- International Mechanical Code (IMC) 2012 Edition
- National Electrical Code, NFPA 70

ELECTRICAL PROVISIONS OF MECHANICAL WORK:

WIRING: The contractor is responsible for all wiring.

All power and control wiring to be complete to all equipment and control devices. The Contractor shall determine the source of electrical energy for the various power and control circuits. All wiring shall be rigid conduit, shall conform with all local codes, the National Electrical Code, and shall be installed by an approved licensed Electrical Contractor. Contractor shall reconnect power from demolished exhaust fan to new exhaust fan, using properly licensed electrician.

DUCTWORK

All Sheet Metal Work shall be installed in accordance with the requirements stipulated in the current issue of NFPA Pamphlet No. 90.

Sheet Metal Construction: Ductwork shall be constructed of 3003-H14 aluminum sheet metal, meeting ASTM B209 standards. Gauges (U.S. Standards) of metal which shall be used, together with the type of joints and methods of stiffening and bracing for various size ducts shall be as follows:

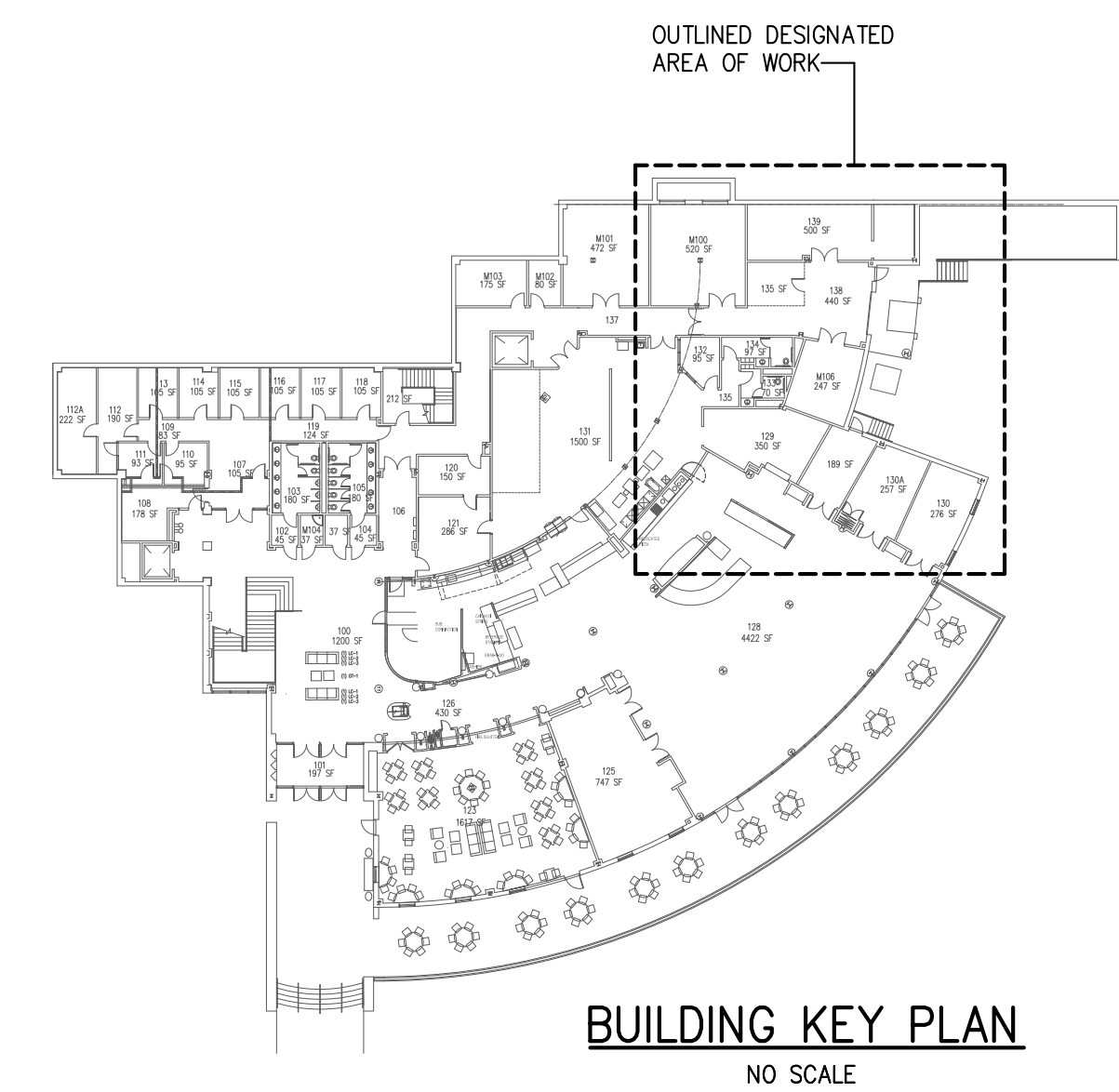
0.04" duct gage

All duct construction shall have all welded seams and joints sealed air and water tight. Duct low points shall feature welded 3/4" pipe nipple with manual 2 piece ball valve and cap.

Duct Hangers and Supports: Shall be either strap hangers or trapeze hangers properly secured to the building construction. Strap hangers, metal attached to ducts, shall be fastened to supporting member by clamps, anchor bolts, or metal screws whichever is most applicable.

SYSTEMS TEST AND BALANCE

Provide independent NEBB certified test and balance agency to perform HVAC air balance of the following systems: Exhaust fan, EX-1, including branch duct connections to new dishwasher.



BUILDING KEY PLAN
NO SCALE

 PERITUS ENGINEERS & ASSOCIATES, INC. No. 024593 CERTIFICATE OF A.D.C. P.A.C.	USC Upstate University of South Carolina
DESIGN: JCP / DRAWN: LDF CHECKED: JCP DATE: 11/12/14 PERITUS #140908 SHEET: M-1 1 OF 1 SHEETS	REVISIONS NO. DATE BY DESCRIPTION 0 11-12-14 JCP